



OPEN DOOR Re-entry & Recovery Ministry

Relationship **Truth** Accountability



Planning, Zoning and Appeals Board
15 October 2013

Client Profile

- **Every inmate has a story to tell: Nearly 31% of all women and 60% of black females are sexually abused and 18% of boys are sexually abused. Males and Female offenders double that abuse. *Multiple references***
- **85% of all youths in prison come from fatherless homes – 20 times the average. *Fulton Co. Georgia, Texas Dept. of Correction***
- **In 2010, an estimated 22.6 million Americans aged 12 or older were current (past month) illicit drug users, meaning they had used an illicit drug during the month prior to the survey interview. This estimate represents 8.9 percent of the population aged 12 or older. *National Survey on Drug Use and Health (NSDUH)***
- **7.9% of sentenced prisoners in federal prisons on September 30, 2009 were in for violent crimes. *Bureau of Justice Statistics***
- **1 out of every 142 Americans is now actually in prison, 1 out of every 32 of us is either in prison or on parole from prison. *Bureau of Justice Statistics***
- **Florida and New York began the twenty-first century with nearly the same size prison population (about 70,000 inmates). During the ensuing decade, Florida added 30,000 inmates and now has more than 100,000 persons behind bars. Meanwhile, New York's prison population fell below 60,000. *Pew 2011 Study- State of Recidivism - The Revolving Door of American Prisons***
- **A little more than half of released offenders (51.8 percent) were back in prison within three years, either for committing a new crime or for violating rules of their supervision. *Bureau of Justice Statistics***

Program Overview & Commitment

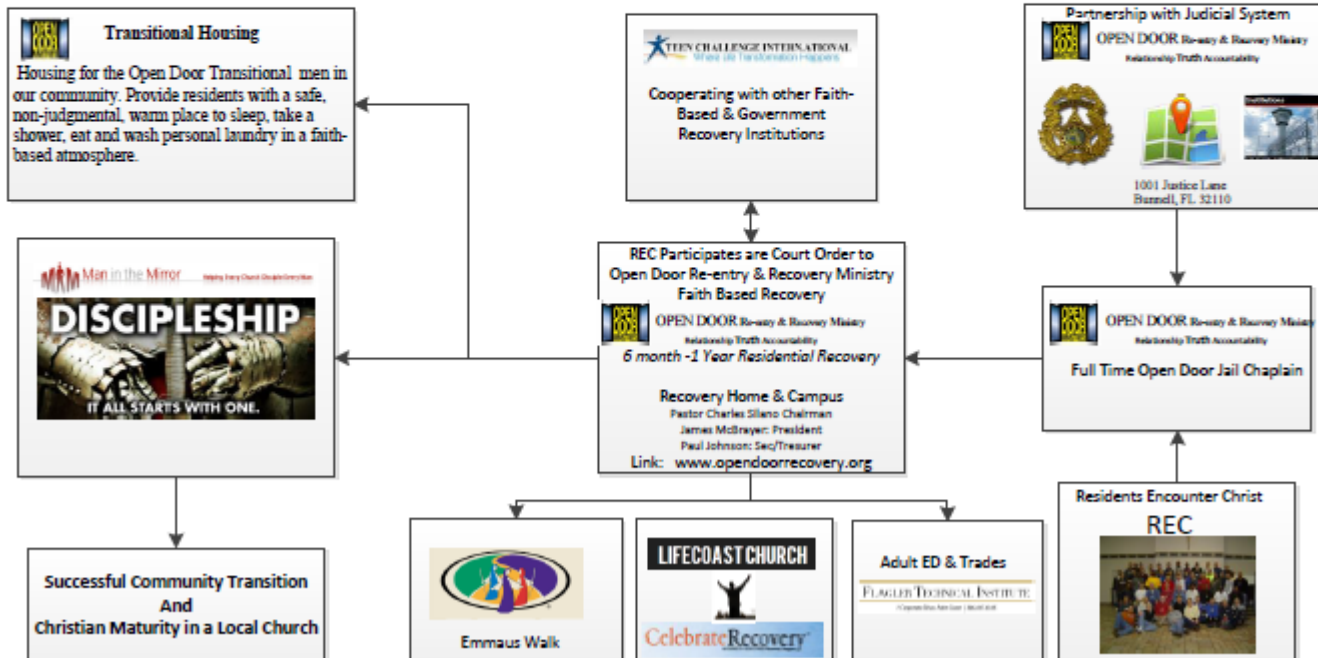
- Residents are Court ordered with signed program agreements
- 9-12 month Resident Program with an additional non-resident 1 year transition
- A validated and implemented **Celebrate Recovery** 12 Step Program
- 6:00 AM- 9:00 PM mandatory programming.
- Administrative compliance with all court ordered reporting
- Community alignment with volunteers for sponsors and mentors.
- Adult education and skills development. Partnership with Flagler Technical Institute.
- Leadership development with house meeting to address resident issues with peers.
- Bi-weekly assessment between residents and staff on program progression.
- Employment assistance and networking
- 24/7 facility monitoring that includes a resident overseer
- Weekly drug testing.
- Unannounced K-9 unit



OPEN DOOR Re-entry & Recovery Ministry

Relationship Truth Accountability

Vision





Previously Approved as a Church

- Two Lots – Adequate Off Street Parking
- ADA Compliant Parking and Bathrooms
- Fire Egress & Lite Exit Signs with Minimal Updates Required
- Open Bay Which Permits ease in reconfiguring. Note: Jeff Lamm Will be Making All Updates
- Initial Contact with local Residence has all been favorable

How Can You Help

- Approve a Special Exception/Recovery Home for 309 East Booe Street for 8 participants and one resident staff/overseer. Note: Bunnell Fire Marshall has indicated via an inspection that an occupancy of 8 residents and one staff overseer is acceptable from a fire safety prospective.
- Establish a close working relationship with Bunnell Police Department to address any community safety concerns, periodic unannounced drug detection, law enforcement classes as deemed appropriate, and potential resident referrals.
- Permit Open Door Re-entry and Recovery to provides updates to Bunnell City Council on operations as requested.
- No Bunnell City funding is requested. Open Door Re-entry and Recovery Ministry operates on donations from our local communities.

Value to Our Community

- 9 residents/year is estimated at a economical savings to Flagler County \$325,000.00. This savings grows yearly exponentially with reduction in recidivism.
- Alternative sentencing with notable reduction in recidivism and successful integration of residents/offenders into our communities.
- Successful integration into our local community with dedicated mentors & churches developing healthy relationships, accountability, and limited benevolence for establishing households.
- Establishment of a base of mentors and sponsors that enhance positive drug education with Juvenile offenders progressing to offences that lead to incarceration.
- Potential expansion of Faith-Based recovery services that may negate the potential Flagler County expansion/expense of expanded jail services/facilities